

"QUALITY PUMPS SINCE 1939"

Product information presented here reflects conditions at time of publication. Consult factory regarding discrepancies or inconsistencies.

ZOELLER
PUMP CO.



FMD485-EU
0808
Supersedes
New

MAIL TO: P.O. BOX 16347 • Louisville, KY 40256-0347
SHIP TO: 3649 Cane Run Road • Louisville, KY 40211-1961
001.502.778.2731 • FAX 001.502.774.3624

visit our web site:
www.zoeller.com

PREASSEMBLED 912 SEWAGE SYSTEM Complete and Job-Ready for Fast Installation!

912 SEWAGE SYSTEMS INCLUDE:

- (1) 50 mm solids sewage ejector.
- (1) 610 mm x 610 mm poly molded basin.
- (1) PSF cover with 50 mmV & 50 mmD.
- Internal 50 mm PVC discharge pipe.
- Check valve included.

PUMP FEATURES:

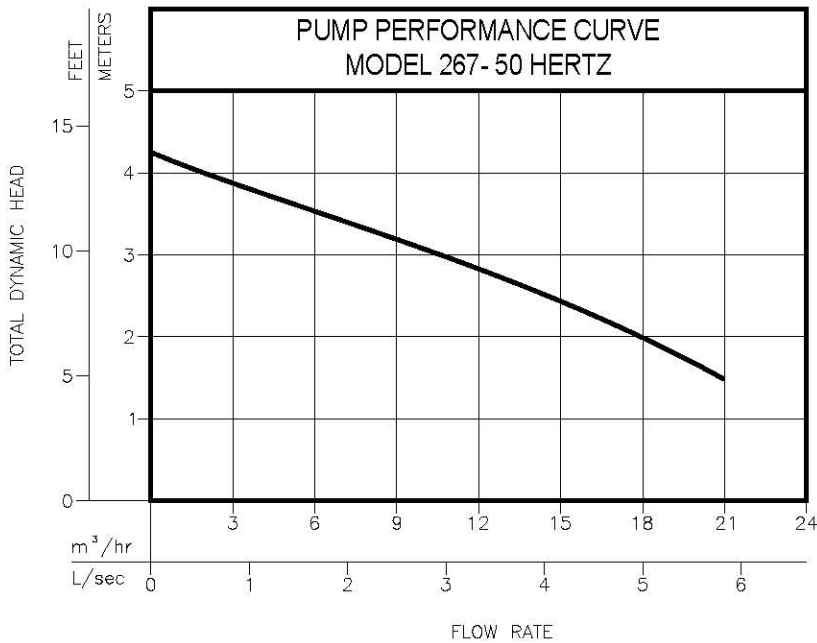
- Cast iron construction model.
- Automatic.
- Full 50 mm solids capacity.
- Thermal overload protection.
- Non-clogging vortex impeller.

BASIN FEATURES:

- 610mm depth for easier installation in troublesome areas.
- 185 liters capacity.
- Vertical support ribs help eliminate stuck float switches.
- Anti-flotation device helps to eliminate basin from "floating".
- 360° molded handle (acts as secondary AFD).
- (1) 102mm pre-drilled inlet (flex-coupling provided by others).
- (7) additional flat areas for inlet installation (field drilled).
- Molded torque stops for added pump support.
- One-piece molded PSF cover with integrated molded foam seal.
- Ribbed reinforced cover to provide additional strength and stability.
- Threaded 50 mm vent and 50 mm discharge piping connections.
- Stainless steel cover bolts and hardware.
- High water alarm available on certain packages.
- Stackable for storage/shipping.

NEW!





Model	Volts	Ph	Mode	Input kw	Amp
U267	220	1	Auto	0.7	4.4
V267	220	1	Nonauto	0.7	4.4



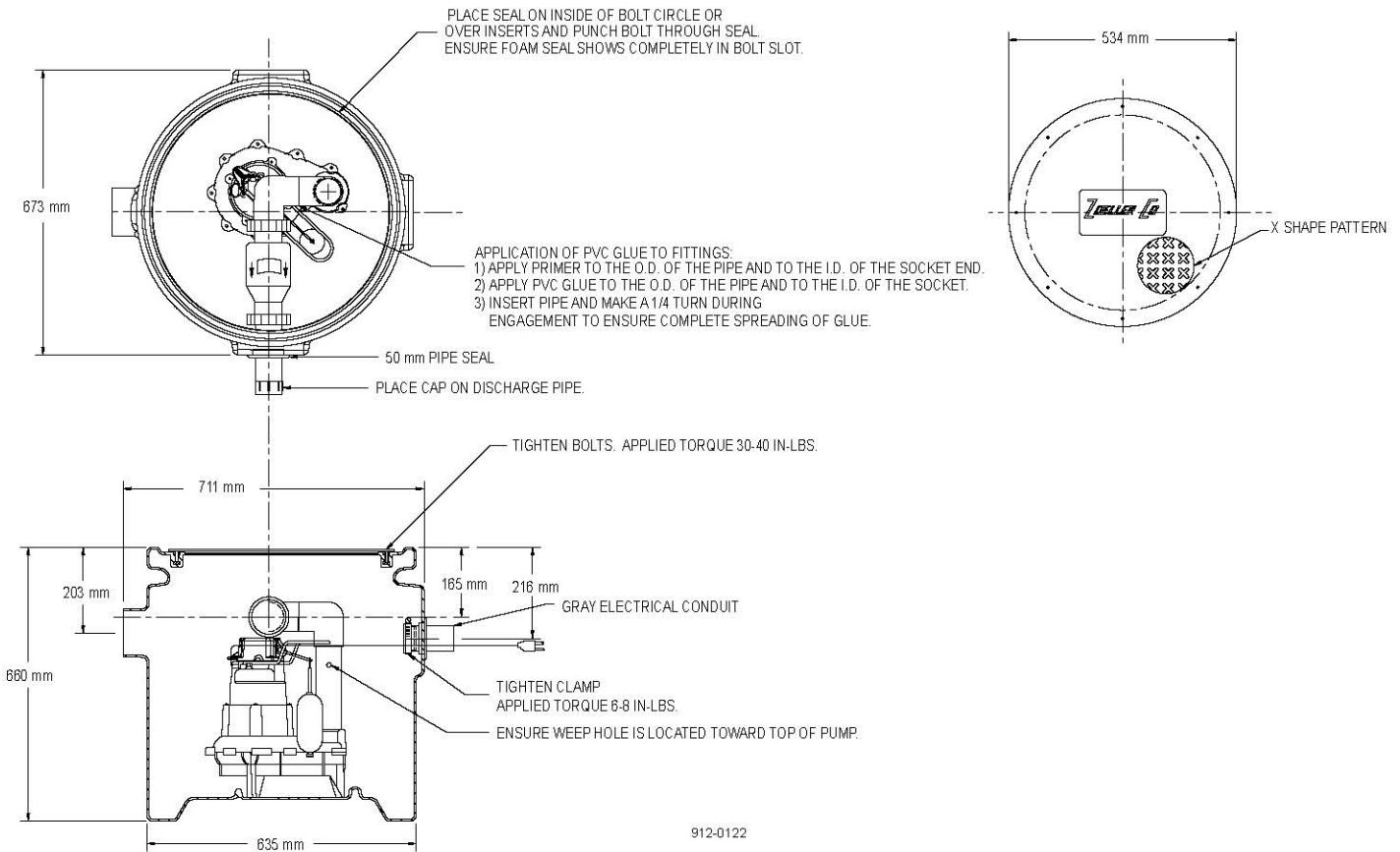
011498

PUMP SPECIFICATIONS:

- 1/2 HP (267) available.
- 220 Volts.
- 50 mm NPT discharge with 50 mm solids capacity.

BASIN SPECIFICATIONS:

- Poly molded basin with PSF cover.
- 185 liters capacity.
- (1) 102 mm inlet (predrilled, coupling by others).
- Integral foam seal.
- Stainless steel bolt kit.



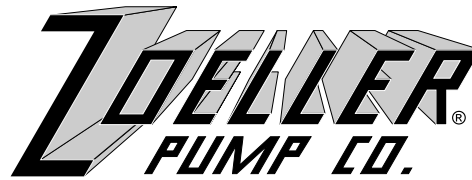
912-0122

JOB READY FOR EASY INSTALLATION



WARNING TO REDUCE THE RISK OF ELECTRICAL SHOCK A RESIDUAL CURRENT DEVICE (RCD) SHALL BE INSTALLED IN ACCORDANCE WITH NATIONAL ELECTRICAL CODE.

"QUALITY PUMPS SINCE 1939"



SECTION: 6.10.044

FM2116

0703

Supersedes

0503

Product information presented here reflects conditions at time of publication. Consult factory regarding discrepancies or inconsistencies.

MAIL TO: P.O. BOX 16347 • Louisville, KY 40256-0347
SHIP TO: 3649 Cane Run Road • Louisville, KY 40211-1961
(502) 778-2731 • 1 (800) 928-PUMP • FAX (502) 774-3624

visit our web site:
http://www.zoeller.com

MODEL:
DATE CODE:
DATE INSTALLED:

PREASSEMBLED/JOB READY
OUTDOOR SEWAGE SYSTEMS
MODELS 912-0082, 912-1082, 912-0083, 912-1083,
912-0084, 912-1084, 912-0085 & 912-1085
INSTALLATION INSTRUCTIONS
PREINSTALLATION CHECKLIST



Notice to Installer: Leave instructions with homeowner.

- 1. Inspect your unit. Occasionally, products are damaged during shipment. If the unit is damaged, contact your dealer before using. DO NOT remove the test plugs from the pump.
2. Carefully read the literature provided to familiarize yourself with specific details regarding installation and use. These materials should be retained for future reference.



WARNING

SEE BELOW FOR LIST OF WARNINGS

CAUTION

SEE BELOW FOR LIST OF CAUTIONS

- 1. To reduce the risk of electrical shock, a properly grounded receptacle of grounding type must be installed and protected by a ground fault circuit interrupter (GFCI) and in accordance with National Electrical Code and local codes. (SEE WARNING BELOW)
2. Make certain that the receptacle is within the reach of the pump's power supply cord. DO NOT USE AN EXTENSION CORD. Extension cords that are too long or too light do not deliver sufficient voltage to the pump motor. But more important, they could present a safety hazard if the insulation were to become damaged.
3. Testing for Ground. As a safety measure, each electrical outlet should be checked for ground using an Underwriters Laboratory Listed circuit analyzer which will indicate if the power, neutral and ground wires are correctly connected to your outlet. If they are not, call a qualified electrician.
4. For Added Safety. Pump must be connected to a 3-prong grounded outlet interrupter device (ground fault circuit interrupter).
5. FOR YOUR PROTECTION, ALWAYS DISCONNECT PUMP FROM ITS POWER SOURCE BEFORE HANDLING. Single phase pumps are supplied with a 3-prong grounded plug to help protect you against the possibility of electrical shock. DO NOT, UNDER ANY CIRCUMSTANCES, REMOVE THE GROUND PIN. To reduce the risk of electrical shock, a properly grounded receptacle of grounding type must be installed and protected by a ground fault circuit interrupter (GFCI) in accordance with national electrical code and local codes.
6. Installation and checking of electrical circuits and hardware should only be performed by a qualified licensed electrician.
7. Risk of electric shock - These pumps have not been investigated for use in swimming pool areas.
8. According to the state of California (Prop. 65), this product contains chemicals known to the state of California to cause cancer and birth defects or other reproductive harm.

- 1. Check to be sure your power source is adequate for handling the voltage requirements of the motor, as indicated on the pump or basin plate.
2. Make sure the pump electrical supply circuit is equipped with fuses or circuit breakers of proper capacity. A separate branch circuit is recommended, sized according to the National Electrical Code for the current shown on the pump name plate.
3. All plumbing (discharge and vent lines) must be installed to meet local codes. Unit must be vented. DO NOT USE AN AUTOMATIC PLUMBING VENT DEVICE SIMILAR TO A "PRO-VENT". Some states require this product to be installed by a licensed plumber.
4. Repair and service should be performed by Zoeller Pump Company Authorized Service Station only.
5. CHECK VALVE MUST BE USED TO REDUCE UNNECESSARY CYCLING OF PUMP.
6. This system must be installed above the water table. Groundwater outside the basin will cause it to collapse.

NOTE: Pumps with the "UL" mark and pumps with the "US" mark are tested to UL Standard UL778. CSA Certified pumps are certified to CSA Standard C22.2 No. 108.

“OUTDOOR” APPLICATION

1. All installations must comply with all applicable electrical and plumbing codes, including but not limited to the National Electrical Code, local, regional and/or state plumbing codes, etc.
2. Dig a hole for the basin. The hole should be at least 24" larger in diameter than the basin diameter to provide 12" of backfill all around and deep enough to provide either 12" of compacted backfill or 6" when a concrete pad is required. Backfill and sub-base should be 1/8" – 3/4" pea gravel or 1/8" – 1/2" crushed stone.
3. **Note: Care must be taken when excavating in order to avoid underground utilities and disturbance of existing structure foundations. The hole should be located at least ten feet from adjacent structures. Additional distance may be required to**

sufficiently locate the basin outside of the loading area of the adjacent structures.

4. Dig a trench for the discharge and electrical conduit.
5. The bottom of the excavation can now be back filled and compacted. Set basin in hole and connect the 4" inlet pipe and 2" discharge pipe.
6. Run electrical conduit to the power source.
7. Backfill around basin with specified media. Care should be used to avoid damaging components or leaving voids when back filling.
8. **Note: Venting can be installed on basin cover as necessary according to all applicable National, State, and Local plumbing codes.**

